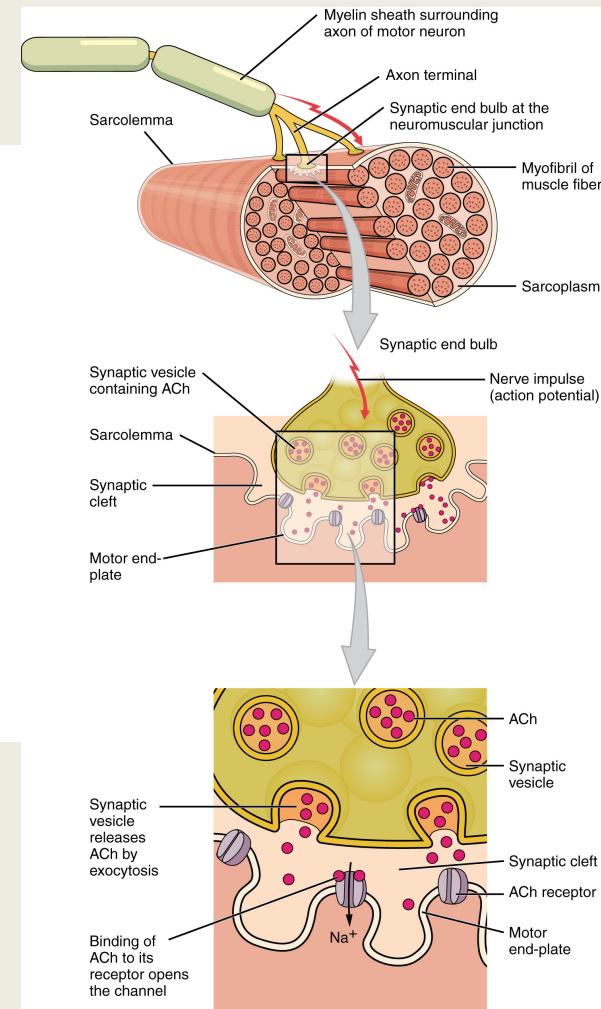
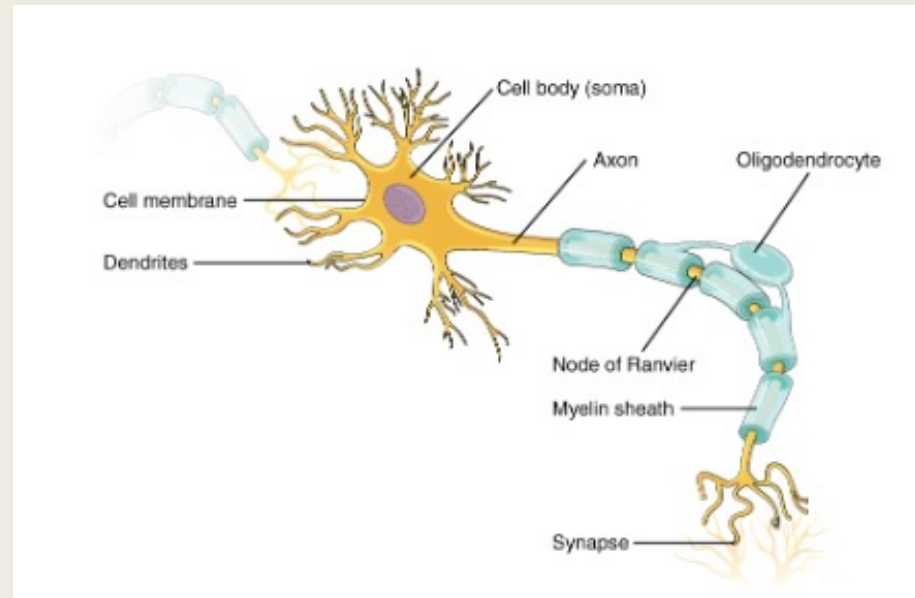


MUSCLE LAB REVIEW SLIDES

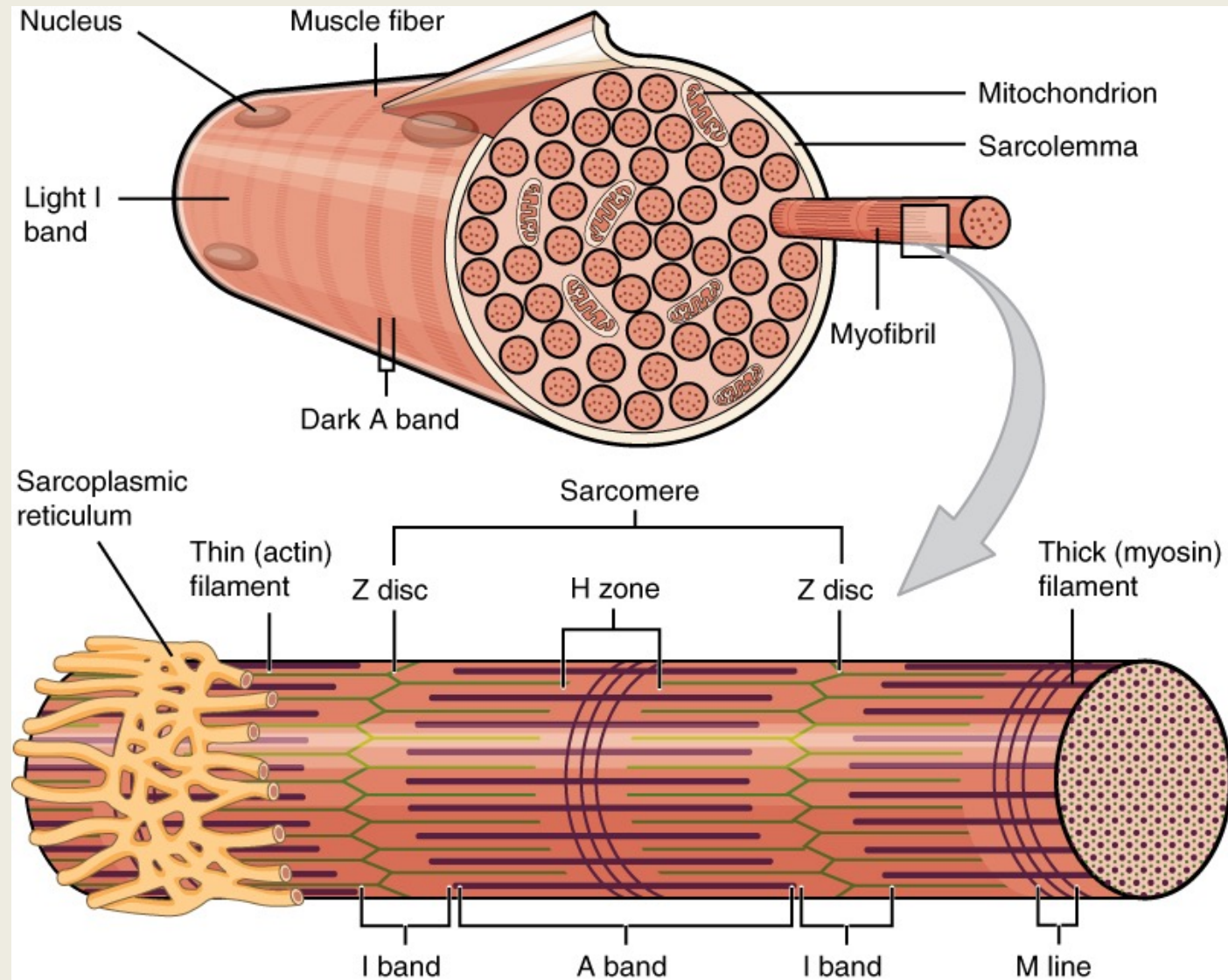
Dr. Lisa Brinn

The Neuromuscular Junction (NMJ)

- Synapse (communication)
 - *Between a somatic motor neuron + skeletal muscle fiber*
- Somatic Motor neuron
 - *Axon terminal*
 - Synaptic end bulb
 - Synaptic vesicles
 - *Neurotransmitter*
 - Acetylcholine
- Synaptic cleft
 - *Space in NMJ*
- Skeletal muscle fiber
 - *Motor end plate*
 - *region of the sarcolemma opposite the synaptic end bulbs*

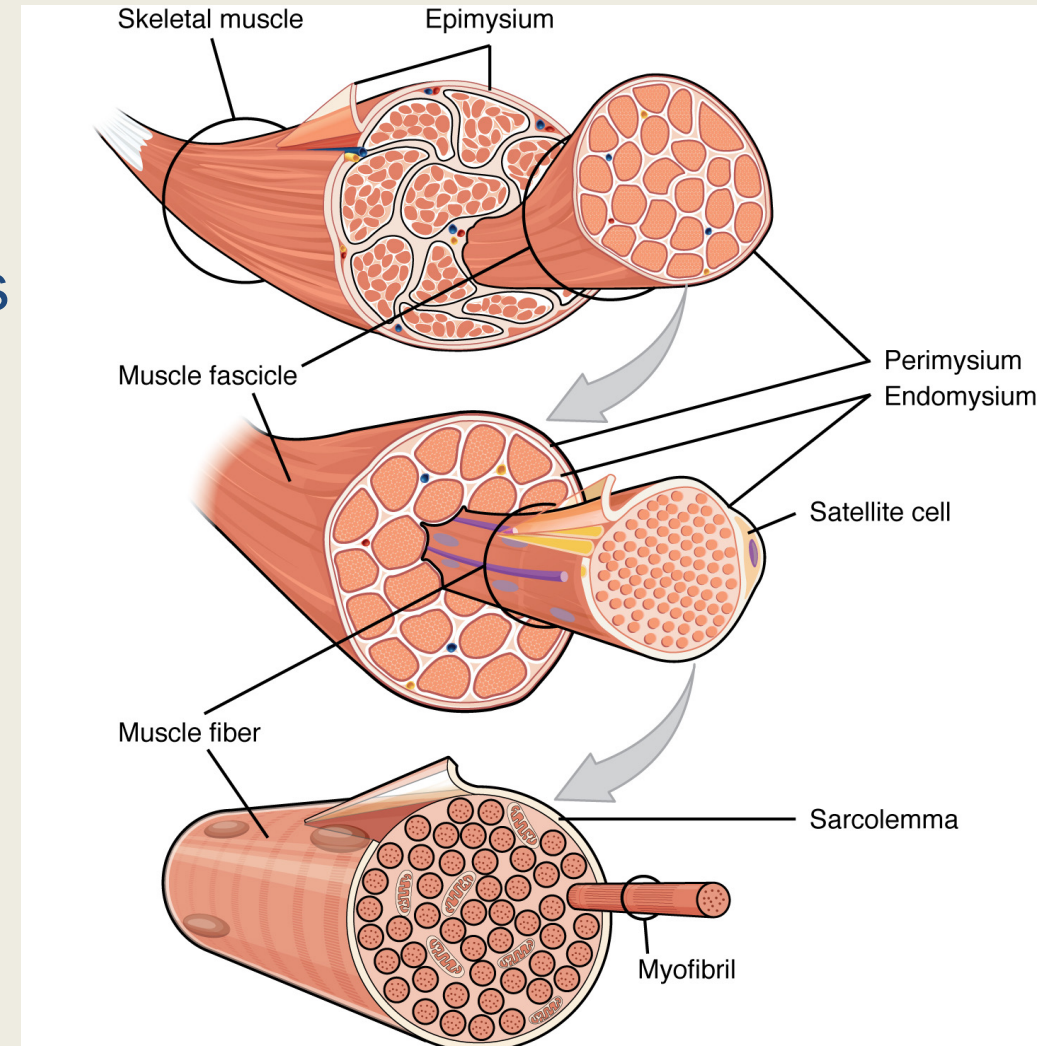


Skeletal Muscle Fibers



Connective Tissue Layers

- Endomysium – covers muscle fibers (formed by myofibrils)
- Perimysium – covers fascicles (bundles of muscle fibers)
- Epimysium – covers skeletal muscle (bundles of fascicles)



Functions of Muscular Tissue

- Through sustained contraction or alternating contraction and relaxation, muscular tissue has 4 key functions
 1. Producing body movements – walking and running
 2. Stabilizing body positions – stabilize joints
 3. Storing and moving substances - sphincters
 4. Producing heat - thermogenesis